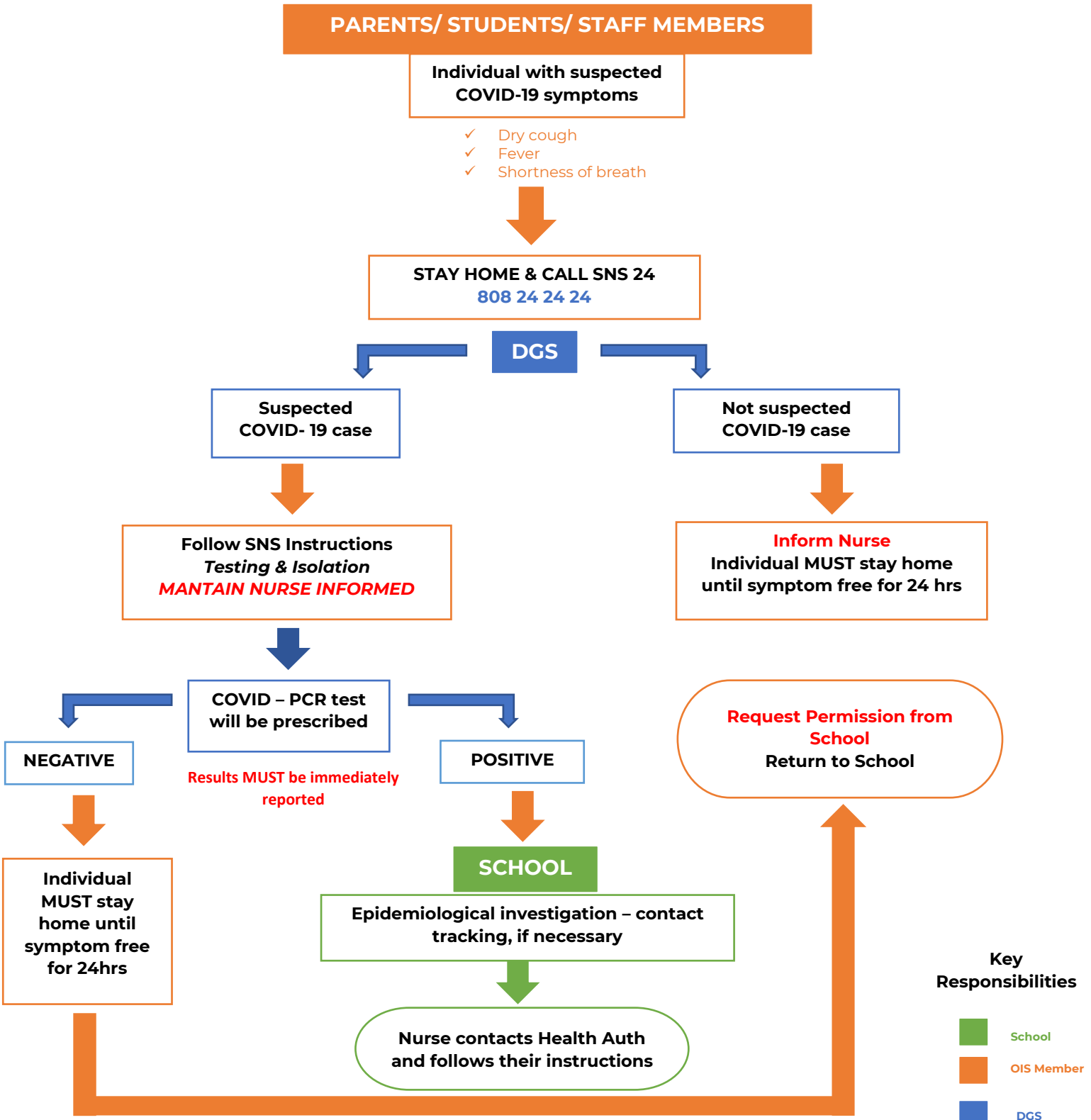


Annex 2: ACTION TO BE TAKEN IN THE EVENT OF A SUSPECTED INFECTION **OUTSIDE SCHOOL HOURS**

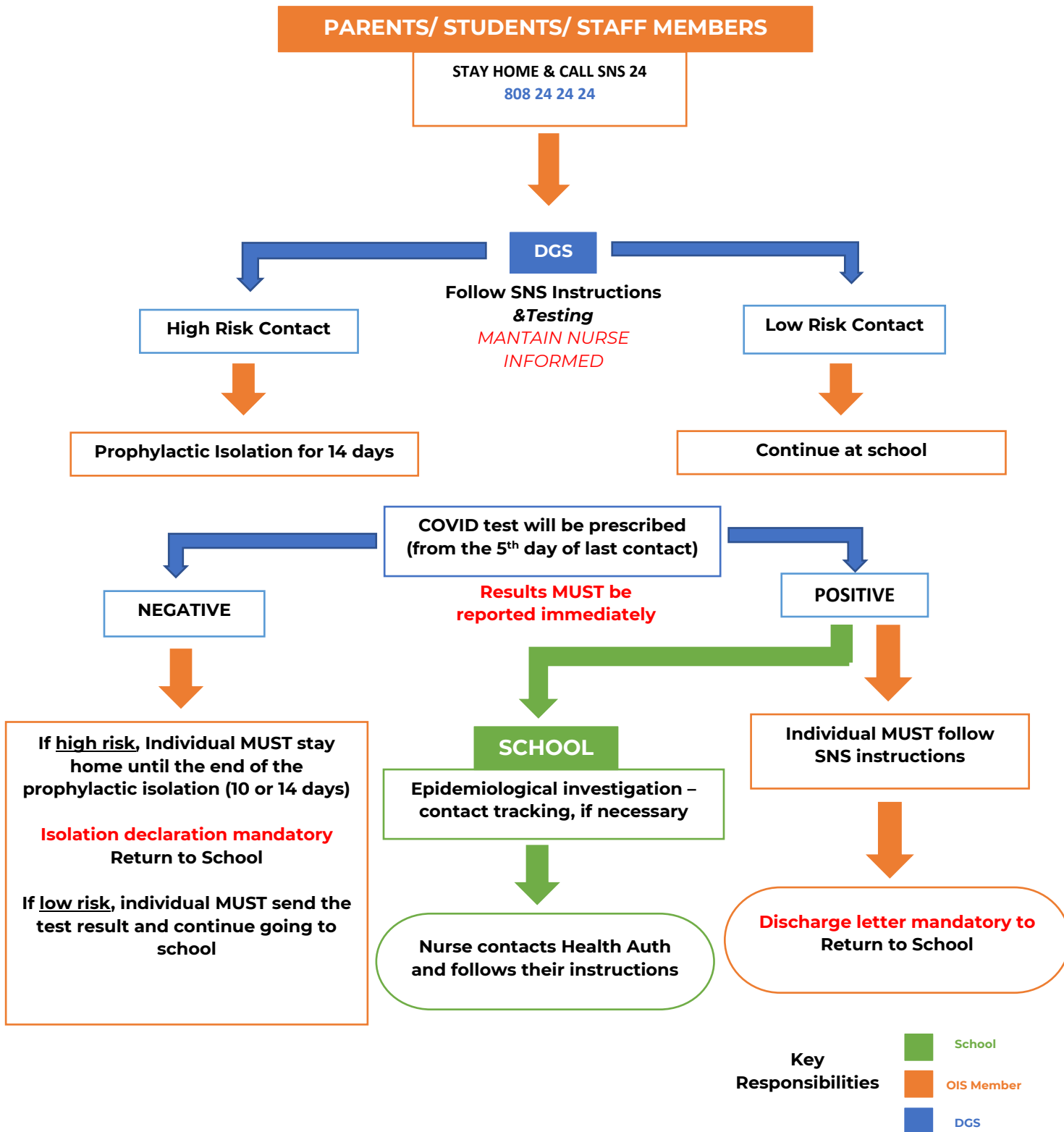


Key Responsibilities

- School
- OIS Member
- DGS

Annex 4: ACTION TO BE TAKEN IN CASE A MEMBER OF THE OIS COMMUNITY WAS IN CONTACT WITH A POSITIVE CASE **OUTSIDE SCHOOL HOURS**

PARENTS/ STUDENTS/ STAFF MEMBERS



Key Responsibilities

- School
- OIS Member
- DGS